

Co-creating an environmentally sustainable
and circular agrifood system

wage
ningen
campus

Innovative power with worldwide impact



*Vision on the development of
Wageningen Campus: 2025 - 2040*

Foreword

This document outlines the joint vision of organisations located on Wageningen Campus for the further development of the campus. A vision that concisely formulates our collective dedication and engagement, and to which we, as the campus community, also want to commit in both word and deed. The input of many stakeholders, from large and smaller campus-based organisations to governments, is incorporated in this vision.

Wageningen Campus has a unique profile, with a great diversity in terms of organisations and people. People who are able to ask the right questions and come up with solutions for the major challenges within the Wageningen Campus domain.

Wageningen Campus is the place to meet each other; within our central domain but also at the interfaces with adjacent domains. Everyone who's part of it, is invited to help Wageningen Campus further develop into the most innovative ten square kilometres of the Netherlands. This is where we jointly realise global social impact.

This vision outlines our joint vision of the future. The actions we shall perform to get there, will be outlined in an activity plan to be added to this vision in the course of 2025.

Let us together utilise and convey the unique profile of Wageningen Campus.



Introduction



Developing new pathways for social impact and economic earning capacity to make the world start living in harmony with nature and within the planetary boundaries again. This is the biggest challenge humankind is facing. It requires knowledge, innovation and a persistent inflow of new professionals. This all comes together on Wageningen Campus.

Wageningen Campus covers 3 by 2.5 kilometres, from the bustle on Wageningen Campus West (Business & Science Park Wageningen) until the developments on Wageningen Campus Oost, the open-air labs (test fields) and the Nergena locations in the municipality of Ede. Approximately 25,000 people are working and studying here at more than 230 organisations in 2025. Here, on this sustainable, circular and climate-resilient campus, we form one ecosystem in the Wageningen Campus domain. Fundamental and applied scientific research, education, R&D and implementation power come together on Wageningen Campus.

The Wageningen Campus domain

This vision mentions the term 'Wageningen Campus domain' multiple times. In broad outline, this domain consists of the themes agrofood, green biotechnology, circular & biobased economy, living environment, climate, AI and high-tech.

Our ambition

Wageningen Campus will further develop during the period 2025 - 2040 into the place where people from the entire world meet one another. With appealing temporary workstations where the vibrant community of researchers, students, entrepreneurs, policymakers and civil society organisations meet, inspire and discuss these issues. Places where we learn from each other and where we jointly develop. Wageningen Campus further develops into one ecosystem that ensures global but also local economic and social impact.

We aim for easily accessible research and innovation facilities for startups and other SMEs. We intensify the collaboration within the Foodvalley region. And we have strong, reciprocal relationships with about 25 Wageningen Hubs in other parts of the Netherlands. These are innovative locations, deeply rooted in practice and offering the campus unique opportunities. These are the locations where knowledge finds its way to society and where practical experiences generate new knowledge.

On and around Wageningen Campus, we seize the opportunities for further development. The campus is expanding on Wageningen Campus Oost and West, and the open-air labs on the north side will become an integral part of the campus.

We attract new established parties that fit in well and increase our diversity and innovative power. In this process, we contribute to regional implementation programmes, such as the 'KennisAs Ede-Wageningen'.

The place to be for interaction and encounters

Wageningen Campus is the knowledge-ecosystem for research, education and innovation in the Wageningen Campus domain. We find one another at the interfaces in between. Researchers, students, entrepreneurs, policymakers, NGOs and other stakeholders: we meet each other on Wageningen Campus and together we form a vibrant ecosystem. An ecosystem in which science finds its way to education, society and economy.

The development Wageningen Campus has gone through in the past fifteen years is impressive. Whereas the focus until now had been mainly on establishing new parties and stimulating mutual cooperation, the emphasis between 2025 and 2040 will be on connection, inspiration and dialogue. We continuously challenge one another to fulfil an active role within the whole. Space will also be created for new, more flexible forms of attendance and interaction within the campus community.

In our vision, the campus will further develop in the next fifteen years into an interactive community in which you develop new ideas and generate impact together. The place you come to from far and wide to find inspiration. Because you just need to be here, whether it's one-off, periodic or structural. Because you have your permanent workplace or study here. But primarily because this is where you find the knowledge and the people with whom you can work on today's major challenges.

Pleasant temporary workplaces with sufficient space and proper facilities do not come about by itself. It requires efforts from several campus residents to realise these locations.

The interaction between and cooperation with established organisations on Wageningen Campus can be reinforced with an inspiring programme and the corresponding campus-wide facilities. Complemented with tailored introductions and activities where possible. This requires strong commitment, contributions and connecting initiatives from all organisations that are located on the campus.



Planned and chance encounters

Interaction and inspiration arise naturally when you are close to each other and are able to take a moment to meet. That is why we create temporary workplaces throughout the campus. Easily accessible locations, inviting you to enter.

Everything I see happening on Wageningen Campus gives me more insight into the way in which my study prepares me for meaningful projects outside the University.

Shanna Koppejan, student MSc Landscape Architecture & Communication at Wageningen University & Research

In addition to scheduled, formal appointments, chance encounters are valuable. They lead to spontaneous ideas and unexpected findings that are asking to be further refined. A vibrant campus increases these opportunities to meet - especially if it can buzz at appropriate times and places.

Theme-oriented cooperation

There are plenty of opportunities to stimulate and organise theme-oriented cooperation between campus residents and with external parties. Conversations with the organisations located on the campus show that there is a great need for this. It takes people to places on the campus they are not yet familiar with. The conversations with campus residents show a great willingness to play a (more) active role in the cooperation with other established parties. It is a joint responsibility to take the next steps and to organise joint initiatives within communities. It also requires for all parties to be well informed on the campus-wide activities. As a strong, motivated campus resident, it is up to WUR to

show consistent ownership. And it also takes commitment from other parties to contribute to the success of Wageningen Campus. Proactive and upon request, financially and in-kind. There is a huge potential to build on our joint success if we continue to put our shoulders to the wheel together.

Theme-oriented cooperation

There are plenty of opportunities to stimulate and organise theme-oriented cooperation between campus residents and with external parties. Conversations with the organisations located on the campus show that there is a great need for this. It takes people to places on the campus they are not yet familiar with. The conversations with campus residents show a great willingness to play a (more) active role in the cooperation with other established parties. It is a joint responsibility to take the next steps and to organise joint initiatives within communities. It also requires for all parties to be well informed on the campus-wide activities. As a strong, motivated campus resident, it is up to WUR to show consistent ownership. And it also takes commitment



from other parties to contribute to the success of Wageningen Campus. Proactive and upon request, financially and in-kind. There is a huge potential to build on our joint success if we continue to put our shoulders to the wheel together.

Enforcing connection

Our globally unique profile attracts a large number of parties: startups, SMEs, multinationals, research institutes, educational organisations and NGOs. Many parties are permanently based here. But this permanent status is not a condition to meet here, to share information and to set developments in motion together. Anyone can come here. There are also great opportunities in this field to reinforce the connections with the Food Innovation District (Ede) and other - existing and future - regional business parks.

Expansion

Our knowledge-ecosystem will be further expanding between 2025 and 2040. Smaller and larger parties will join us. This includes parties that come here every now and then or parties that are sometimes regularly present on the campus for several years. We imagine that over 150 new organisations, with more than 2,500 new jobs, will actively contribute to this expansion.

Feeling at home for students

Wageningen Campus is the place for approximately 16,000 BSc, MSc and PhD students where they lay the foundation for their careers, now and in the future. Many students live on or near the campus. In an attractive green environment to study and to live, with plenty of spaces for encounters and relaxation, they feel at home.

The presence of that amount of talent in the proximity has been the decisive factor for many companies to settle down here. The students are crucial to them because of the fresh ideas, critical eye and scientific insights they bring to the

table. On the other hand, these companies offer students valuable experiences as a steppingstone towards a great career. The cooperation between students and researchers within the companies not only fosters the professionalisation of students, but it also stimulates the development of companies. This is yet another reason we want to invest in interaction and encounters: to further enhance the chance of meeting between companies and students.

Wageningen Campus continues to be an inspiring place for study and research, not just because of the well-equipped buildings, but also because of the present research facilities and open-air labs. The coming period will be used to explore how the campus can be utilised even further for outdoor education and research. The connection with the innovation and demonstration centres and test fields of the 25 Wageningen Hubs elsewhere in the Netherlands, provides a unique impulse to education, research and value creation. Scientific and large-scale practical research is conducted at these locations, in close cooperation with farmers, producers, suppliers and other industry parties.



All domain knowledge and innovative power bundled

Wageningen Campus is the international hotspot where we meet each other as curious, creative, learning, inquisitive and enterprising minds. We develop knowledge and solutions for global challenges around the Wageningen Campus domain. Nowhere else in this world, the knowledge on these topics has been gathered so profound, so diverse and so integrated.

For the people who are active in this domain, the campus is an irresistible place to go to. Because you achieve more together than on your own. It is the place where leading scientists conduct pioneering research that is translated by companies and in society into solutions for urgent problems. Where companies utilise scientific knowledge and where science utilises the experiences of companies. Where startups and multinationals can innovate and create impact together. It is also the place where students mature and take their first steps in their careers.

We want to reinforce the joint collective of campus residents. For example by means of programmes aimed at entrepreneurship, community building and by further expanding startups as a collective of campus residents.

Deploying figureheads

To emphasise the unique profile of Wageningen Campus, we want to make better use of the eloquence of 'figureheads' for joint profiling. In doing so, we work together as campus residents as much as possible.



wageningen
campus

Regional significance

Thanks to Wageningen Campus, also the nearby business sites such as the 'Nude' and the 'Haven' in Wageningen, but also locations in Ede (Food & Business Park), Veenendaal and Ochten are appealing as a business location. Several innovative companies have consciously settled in the proximity of Wageningen Campus. This is beneficial for the attractiveness of the region for companies.

The relationship between Wageningen Campus and the municipalities of Wageningen and Ede is of major importance. We, as campus residents, actively promote frequent meetings with our partners in the region, including Foodvalley region and the province of Gelderland.

Shared facilities

We want to distinguish ourselves from other campuses by creating appealing, inspiring temporary workstations equipped with adequate facilities to take ideas forward. Organisations are able to use shared facilities here.

We further want to optimally facilitate the use of shared research facilities in Wageningen. Researchers of companies and scientists of other knowledge institutions, including the TO2 institutions, should also be enabled to use these facilities – and vice versa. This leads to efficient utilisation of the available facilities and prevents the occurrence of unnecessary dilution.

The IQ-X mass spectrometer is an advanced research device that cannot be found everywhere. A major plus is that we pay according to use without the costs of investment.

Maria Tzoumaki, Director of Discovery and Open Innovation, Kalsec Inc.

The availability of these facilities is of crucial importance for many companies for the decision whether or not to settle on Wageningen Campus. Stratification in terms of functionality and pricing is an important element in this regard. Several startups and SMEs are in need of well-equipped but affordable (shared) research facilities such as kitchens, labs or greenhouses. Other startups are in search of more general research facilities, such as maker spaces.

Wageningen Hubs

The great diversity of Wageningen Hubs constitutes a strong asset. These are locations of WUR or initiatives in which WUR participates. This is where you experience the power of organisations driven by innovation and application in many subdomains. The hubs offer the ecosystem of Wageningen

Campus a unique opportunity for scale-up in practice. Events as the 'Aardappeldemodag' and the 'Nationale Waterstofdag' attract a large number of visitors from the relevant sector. The field locations clearly demonstrate what different parties can accomplish together in areas such as sustainable food systems (Boerderij van de Toekomst), sustainable cities (AMS Institute) and climate (Delta Climate Center). It is our ambition to make even more visible what parties can achieve together through these hubs. This offers opportunities for more interaction between these locations and the parties on Wageningen Campus in terms of education, research and value creation.

Reliable data

There are great opportunities for several campus organisations to raise their profile as part of an ecosystem in which reliable data are generated with the help of high-quality facilities in laboratories. An example is the internationally leading Netherlands Plant Eco-Phenotyping Centre (NPEC). Wageningen Campus also is the place where AI can be made practically applicable: from data to daily use. The future influence of new developments on the daily routines on Wageningen Campus is hard to predict at this time.

We keep anticipating new technological developments and the impact thereof on the Netherlands. As Wageningen Campus, we contribute to eight of the ten priorities of the National Technology Strategy and work on a multitude of key technologies. We are traditional frontrunners when it comes to process technology and biomolecular and cell technology. Additionally, further digitisation and AI, robotics, digital twins and several types of imaging technologies have been an indispensable part of the Wageningen Campus domain for a considerable time. Sensor technologies such as integrated photonics and other chip technologies have meanwhile also found their way in Wageningen. We consider it our task to facilitate scale-ups that are active in these and associated high-tech fields.

Wageningen Campus in a spatial perspective

Those who look around between Atlas and Aurora, oversee a large part of Wageningen Campus. Although construction is still ongoing, the campus looks mature. The inviting buildings are surrounded by open space and plenty of green, making it an appealing, inspiring environment for students, employees and visitors. The campus scintillates in all aspects that knowledge from all over the world gathers here. Good use of space is a prerequisite for further development.

The development achieved is cause for pride. Wageningen Campus has grown considerably in a short period of time, among other things because the R&D centres of four multinationals came to settle here. But also because research institutes such as NIOO-KNAW, OnePlanet Research Center and the Jan IngenHousz Instituut settled down here. Startups, scale-ups, innovative SMEs and hubs of international companies found their place in the Plus Ultra buildings and on Wageningen Campus West.

Today, in 2025, Wageningen Campus is the place where more than 230 organisations are located. More than 25,000 people found a place to work and to study on Wageningen Campus. In addition, hundreds of visitors are welcomed here every day. By making well-considered spatial choices in dialogue with our stakeholders, we want to continue reinforcing ourselves.

Further spatial development

The zoning plan of Wageningen Campus offers room to support the planned development of WUR and other organisations between 2025 and 2040. There is room for a large standalone building (monolith) and some medium-sized buildings for education and research and for knowledge-intensive companies on Wageningen Campus Oost and West. As one of the major parties, WUR is setting the course for further spatial development around the campus. This lays the foundation for developments in the area north of Wageningen Campus, including the Nergena locations.





the Food Innovation District, the Food & Business Park Ede and the newly to be developed sections of the KennisAs Ede-Wageningen. This holds great opportunities to bring knowledge developed on Wageningen Campus to economic and social value.

The fact that Wageningen Campus is located this close to downtown Wageningen is appealing to many. Wageningen Campus is committed to an even stronger connection with the immediate environment, also in physical terms. Consequently, the city and the campus gain in attractiveness.

Living on and around the campus

The regional housing challenge is considerable, with more than 40,000 houses to be built. Wageningen Campus responds to this challenge in partnership with housing association Idealis, WUR and the municipality of Wageningen by offering suitable housing. The campus will expand the number of rooms for students. Wageningen Campus will also continue its efforts to maintain the attention for housing – as an important factor of an attractive business climate – on the political and administrative agendas. When knowledge workers and former students continue to live in the region, they are retained for the ecosystem and make a valuable contribution to society, both locally and regionally.

Inside and outside the heart of the campus

Wageningen Campus covers three linear kilometres, including the entrepreneurial Wageningen Campus West and the development of Wageningen Campus Oost. We want to take advantage of the opportunities to further enhance the spatial connections within this area. The same applies to the further connection along the KennisAs Ede-Wageningen (from the Haven and downtown Wageningen to the Food Innovation District near station Ede-Wageningen). As a joint knowledge-ecosystem, we, Wageningen Campus, would like to continue good conversations about that.

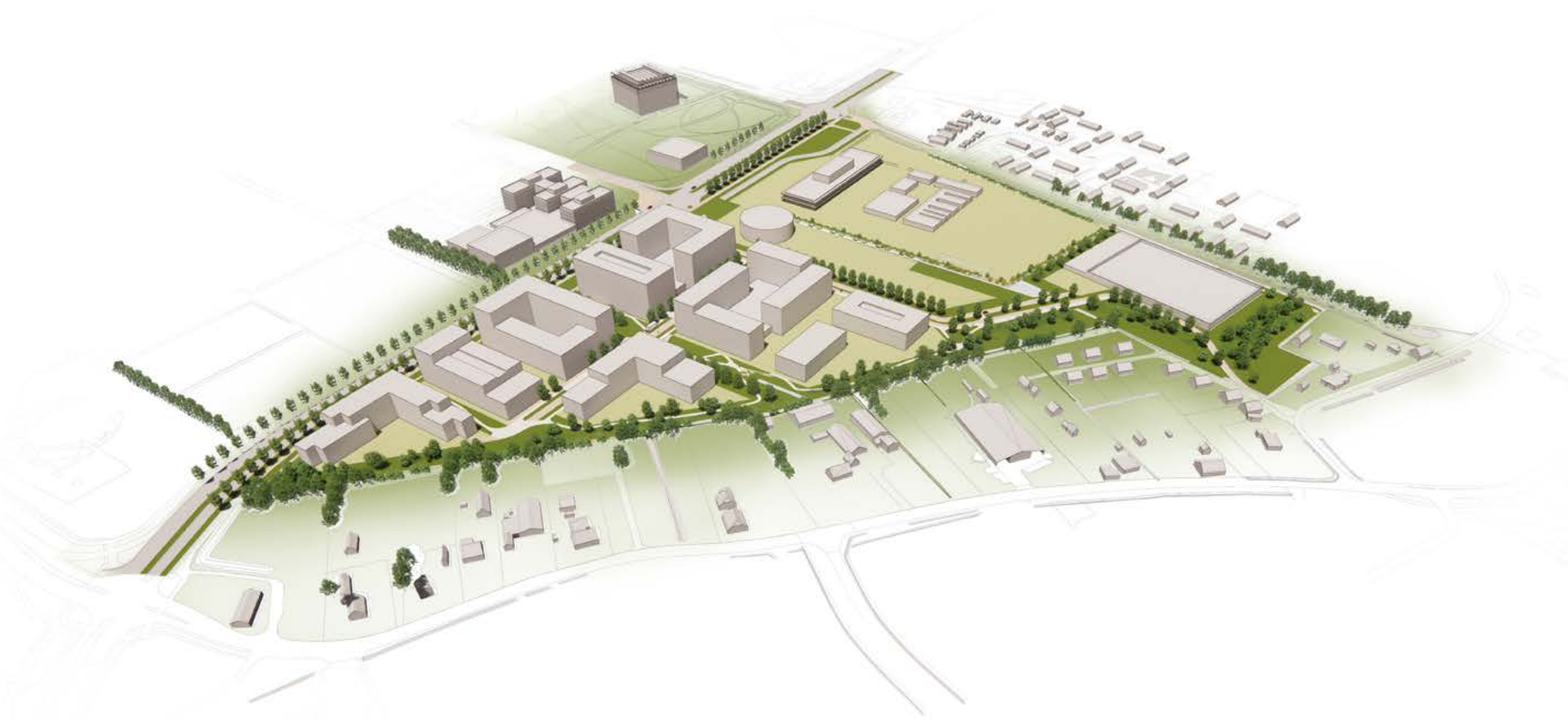
The focus on Wageningen Campus is on education, research and the valorisation thereof. For production activities and not-knowledge-intensive functions, companies are primarily reliant on other locations in the surrounding area, such as

Development Wageningen Campus West and Oost

The municipality of Wageningen determined the zoning plan for Wageningen Campus Oost at the end of 2022. The plan envisages about 80,000 square metres of building space in the area of the campus where NIOO-KNAW and Aeres University of Applied Sciences are already located. Here is space for companies and other organisations that primarily

focus on research, education, knowledge-intensive development and innovation. Wageningen Campus West also preserves and provides room for knowledge-intensive activities, including possibilities for production at pilot-scale. Explorations on the future possibilities to offer a somewhat broader profile of activities are currently ongoing. It is important for Wageningen Campus Oost and West to be an integral and fully-fledged part of Wageningen Campus, not only in terms of activities but also with physical connections.

wage
ningen
campus



Physical connectivity

An international meeting point like Wageningen Campus has great interest in excellent accessibility. Research conducted by the province shows that Wageningen Campus scores mediocre on the theme accessibility. This conclusion also is in line with the perception of campus residents. We continue to work on improvements for sustainable mobility for different target groups (public transport, bicycle paths and pedestrian walkways, car traffic) in consultation with governments.

We want public transport to develop into a fully-fledged alternative for the car for a considerable part of the visitors and employees. The connections for bicycles and pedestrians to and from campus can also be improved. We remain in active dialogue with our stakeholders on this topic. As soon as the connections for public transport, bicycles and pedestrians have been brought up to standard, the car can be gradually referred to the edges of Wageningen Campus.

This does not alter the fact that the accessibility of Wageningen Campus by car should also be improved. The connections by car largely date back to the time of the first development of the campus. We are therefore pleased with the intention of the province of Gelderland to execute the plans ensuring better accessibility of the campus by car.



Physical connections are essential to attract and retain innovative talent for whom adequate accessibility by all means of transport is a prerequisite.

Remco Gertsen, VP HR & CA Keygene

We consider the construction of a tunnel an amazing opportunity to connect Wageningen Campus Oost with the heart of the campus and to present it as a spatial whole. Experiences on other campuses have taught us that an intersecting road is a huge obstacle for interaction and encounters. We also advocate a direct connection between the central part of Wageningen Campus and Wageningen Campus West that should unlock traffic by bus and bicycle and for pedestrians, but also traffic by car. The positive appearance of an easily accessible campus is not only important to students, but also decisive for companies and other organisations to invest or to settle down in the area.

Apart from adequate accessibility for work and study, the accessibility of facilities on the campus also plays an important role in the daily functioning and attractiveness of Wageningen Campus. A sports centre therefore is an important facility for the Wageningen Campus and the vitality of its residents. We want to improve the accessibility of sports centre De Bongerd as this is one of the most important places to meet on Wageningen Campus. It is not just the physical accessibility that could be improved, but it also has to become easier for students and employees of organisations on the campus to take part in sports there.

wage
ningen
campus

A sustainable, circular and climate-resilient campus



Wageningen Campus wants to offer its residents a sustainable, circular and climate-resilient campus, in which WUR has been the driving force from the very beginning and to which other established organisations now also contribute substantially. 'Practice what you preach' is something we take seriously and put into practice.

It is our ambition in the period 2025 – 2040 to develop Wageningen Campus more explicitly into a sustainable and climate-resilient workplace and as a showcase for research of WUR and other innovative organisations; research that finds its way to practice. A field lab in which students, researchers and companies work closely together in research and study assignments. With a special place for the surrounding open-air labs as a green connection with the surrounding landscape. The open-air labs will be made even more visible as examples of sustainable and nature-inclusive use of land, including food production.

Integral sustainability

Wageningen Campus focuses on integral sustainability. For example, as cooperating organisations we strive for closed cycles of energy, water and materials, also when constructing new buildings. Examples of circular building structures are the parking building P1, Plus Ultra III, the building of NIOO and Cibia, the new pilot hall for food technology. The latest insights on heat pumps have been applied in the Metora building. And the latest knowledge on green water retention roofs has been utilised in the Frigo building for cold storage. This is how we stay connected with the domains in which we profile ourselves as campus

residents and apply our collective knowledge.

We opt for climate-resilient solutions as we further develop the campus. For example by storing water on the campus and by taking heat-reducing measures in buildings and outdoor areas. We consciously choose where to position what type of use in the space.

The knowledge on nature and biodiversity finds its way on Wageningen Campus. We continue to promote biodiversity through our flora and fauna policy. We provide growing and living conditions that allow the campus to host a large variety of plants and animals. And we reinforce the connection with the surrounding nature. This is the starting point for all new developments. It contributes to Wageningen Campus being a pleasant, healthy place to work, to study and to stay.

Integral sustainability also means that we aim for sustainable business operations on the campus. For example by prominently offering plant-based food and by reducing waste flows.

Energy transition

Wageningen Campus wants to stay at the forefront in energy transition. That is the reason why we reduce the demand for energy: what is not needed, does not have to be generated. Secondly, as a knowledge-ecosystem, we want to switch from gas to green electricity as soon as possible. Thirdly, we explore how energy can be better mutually distributed. This might include generation, levelling off the peak demand and distribution of energy.

That will simultaneously reduce the disruption we will experience over the next five to ten years from grid congestion when developing Wageningen Campus Oost and West. Although the grid congestion temporarily puts a brake on our ambitions, the bar remains high for us.

Ecological knowledge is the basis for a sustainable campus: source of inspiration for society. 'Ecology for life'.

Ingeborg Pak, Managing Director Nederlands Instituut voor Ecologie (NIOO-KNAW)

Many buildings on Wageningen Campus are already connected to a source for thermal energy storage. This reduces the energy consumption and makes it easier to switch from gas to electricity. We aim to expand sustainable energy generation for our own use, with or without battery storage on Wageningen Campus. Where fossil resources are still needed for security of supply, we will use them as efficiently as possible.



wageningen
campus

Increasing clout



Wageningen Campus is a prime location. But there are more factors that make a knowledge-ecosystem a success. Ultimately, the development of talent, the quality of research and the valorisation thereof for the benefit of society and the economy determines how successful we are as a whole. Knowledge-intensive companies and institutions on Wageningen Campus are crucial to that end. Good connection to the whole is a prerequisite: a diverse pallet of organisations is required to create an impact on all subdomains.

Companies and not-for-profit organisations that fit this pallet, do not automatically come to Wageningen Campus. The fact that so many new parties have settled here in the past ten years, is the result of joint efforts of a strong network of the WUR campus organisation and liaisons within the WUR knowledge units. But also of the presence and efforts of other campus residents and alliance partners, such as StartLife, Foodvalley and OostNL.

Strategic acquisition, attractive business climate

Wageningen Campus has room to significantly grow in the next ten years. That requires a campus organisation with sufficient clout to shape that growth. The goal is to acquire different types of (international) organisations that bring added value to the already present knowledge-ecosystem. In doing so, we want to increase the diversity of organisations in terms of work area and organisational form. This requires uniting acquisition and organisational power. A future-proof campus organisation is a prerequisite for proactive and strategic acquisition, with sufficient people and means. The latter is also required to maintain appealing activities and

facilities in an organisational sense, and to offer startups the proper guidance and opportunities to grow.

Precondition for further development of the campus is an attractive integral business climate for existing and new parties. This includes factors such as good accessibility, sufficient room for development and an attractive, flexible and sustainable location environment. But also the availability of young talent is important, as well as sufficient housing for students and employees of campus-based organisations. For SMEs, including startups and scale-ups, the presence of accessible and affordable research and innovation facilities is also a must.

Solving bottlenecks regarding electricity and water

In view of the limited capacity of the power grid in the Netherlands, it is crucial that the existing grid congestion problems are solved quickly. The campus is only able to develop further if sufficient grid capacity is available. The water provision in relation to the business climate also is something that needs to be closely monitored. Several provinces, including Gelderland, already face problems with this.

Finally

Time to get started with our joint vision: *co-creating an environmentally sustainable and circular agrifood system*. We do so with pride about everything we already accomplished together and with enthusiasm about the opportunities we see to make Wageningen Campus even more successful.

Our ambition is clear: Further developing Wageningen Campus into one ecosystem that ensures global and local economic and social impact. With appealing workplaces where we learn from each other and where we jointly develop.

The broad outline of our activity plan includes what actions are needed to realise our joint ambition. This activity plan is yet to be added to this vision.

In summary, the activity plan contains three categories:

1. An inviting, vibrant and responsive campus

Together, we want to continue building a lively campus that connects people and parties. Where you find accessible research and innovation facilities to develop ideas. And where sufficient clout is present to further grow and strengthen our knowledge-ecosystem with an ever-increasing diversity of parties.

- Increasing the vibrancy of Wageningen Campus: more interaction, more dialogue, more collaboration. Ensuring a diversity of 'workstations' and opportunities for encounters.
- Realising accessible research and innovation facilities, with attention to accessibility for innovative SMEs.
- Focusing strategic acquisition on new settling parties that operate within the full width of the Wageningen Campus knowledge domain.



wage
ningen
campus

2. An attractive business location with good connections and plenty of opportunities for development

We are committed to create an easily accessible Wageningen Campus, connected with the nearby and further surroundings. From Wageningen Campus West up to Wageningen Campus Oost and further north towards Ede, there are still plenty of opportunities for development of our knowledge-ecosystem. We continue to utilise the unique value of the open-air labs and enhance the interaction with research and innovation hubs of WUR across the Netherlands.

- Further improving the accessibility for all means of traffic.
- Further developing Wageningen Campus Oost and West.
- Proactively responding to spatial processes and also seizing the opportunities north of Wageningen Campus.
- Reinforcing physical connections with Wageningen, Ede and the Foodvalley region.
- Enhancing and better profiling of the added value of open-air labs.
- Reinforcing the interaction with Wageningen Hubs elsewhere in the Netherlands.

3. A sustainable and climate-resilient campus

We continue our efforts to develop Wageningen Campus into a sustainable and climate-resilient campus and to strengthen the existing natural connections. Together, we keep raising the bar.

- Adopting circular business operations of campus residents as the starting point.

- Enhancing grounds and open-air labs as examples of sustainable, climate-resilient and nature-inclusive use of land. Aiming for showcases.
- Pursuing the energy transition and smartly anticipating grid congestion.
- Reinforcing biodiversity by designing sites nature-inclusive and connecting them with the surrounding landscape.
- Further enhancing our identity as the most sustainable, green and nature-inclusive campus of the Netherlands.

6 priorities for the coming years

The six items below are both practically feasible in the next years and strategically important for the long-term development of Wageningen Campus.

1 Strategic acquisition

Investing in a future-proof campus organisation, capable of proactive and strategic acquisition, with sufficient people and means.

2 Increasing accessible and affordable research and innovation facilities

Investing in well-equipped, affordable (shared) research facilities to maintain the appeal for Wageningen Campus as innovation hub.

3 Stimulating interaction and cooperation between campus residents

Taking advantage of the great willingness of parties to develop inspiring programmes and meeting points, accelerating knowledge sharing, innovation and encounters with students.

4 Further developing Wageningen Campus Oost and Wageningen Campus West and ensuring better physical connections

Seizing opportunities to present Wageningen Campus as a spatial whole.

5 Accelerating energy transition and dealing with grid congestion

Investing in sustainable energy generation and efficient energy distribution.

6 Improving accessibility

Realising improvements in the accessibility by bicycle, car and public transport.